

# EG SERIES

Lubricated Rotary  
Screw Air Compressors

The Technological Edge  
To Power Your Business

11 – 250 kW / 15 – 300 HP (60 Hz)

**ELGI**<sup>®</sup>  
Always Better.



# EG SERIES

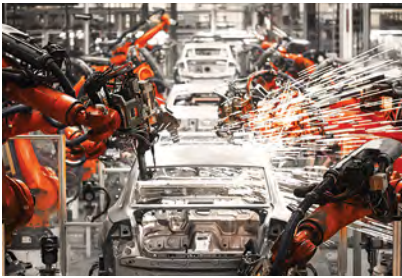
**Superior Energy Efficiency | Low Total Cost Of Ownership  
Industry Leading Warranty | Best-In-Class Reliability**

## Power consumption on your mind?

Around the world, businesses rely on compressed air to power their manufacturing processes. Increasing power costs and global competition make it more important than ever for manufacturers to choose the correct air compressor.

Automotive, Chemical, Food and Beverage, Fast-Moving Consumer Goods, Cement, Packaging, Pharmaceutical, Textile, and Ceramic Industries and Workshops rely heavily on compressed air. These industries fuel the world's economy.

## Applications



**AUTOMOTIVE**



**FOOD AND BEVERAGE**



**CEMENT**



**PACKAGING**



**MINING**



**AGRICULTURE**



**TEXTILE**



**CERAMIC**



**MANUFACTURING**

# EG SERIES

THE ECO-FRIENDLY ENERGY-EFFICIENT COMPRESSOR

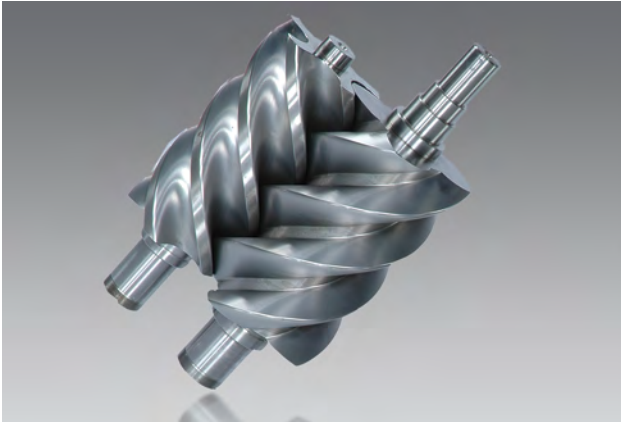


Elgi Equipments Limited was established in 1960 as an air compressor and garage equipment manufacturing company. Over the years, the company has exponentially grown its product portfolio and aligned its offering to changing market requirements.

Today, Elgi Equipments Limited is a global air compressor manufacturer with a broad line of innovative and technologically superior compressed air systems. ELGi does business in 120+ countries and is proud of its 2 million+ satisfied customers.

\* All images are for representative purpose only. Actual product may vary.

## Features and Benefits



### Highly Efficient Airend Superior Energy Efficiency

ELGi's unique airends are equipped with in-house developed  $\eta$ -V profile rotors, with 4/5 lobe combination.

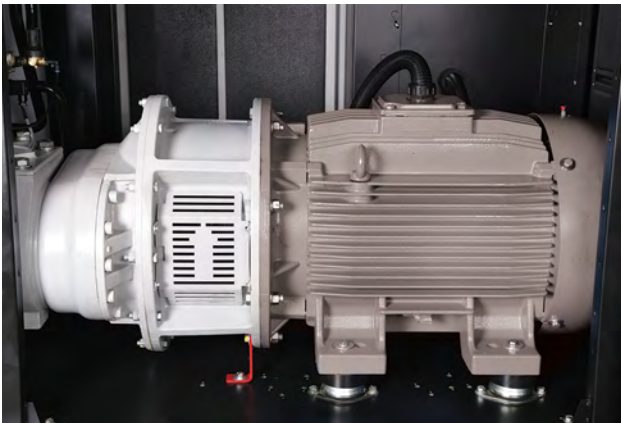
- Low speed
- Highly energy efficient
- Lifetime warranty\*



### Advanced Package Design Functional and Aesthetic

The package is configured with subsystems that are designed to:

- Minimize system losses which maximize energy savings
- Ease of service
- Low noise levels



### Motors Reliable and Efficient

The motors with a larger core and increased windings offer:

- TEFC severe duty for industrial applications
- Direct coupling with air end increases energy efficiency
- High ambient rating



### Intake Valve System Integrated Blow-down Unit, Solenoid Control, and Actuator

- Reduces starting load on motor
- Optimal capacity control
- Modulation (55 kW and above) provides smoother and more reliable operation when receiver capacity is limited

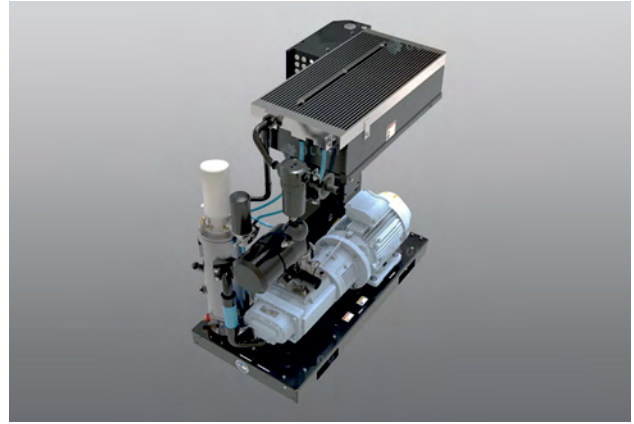
\*Terms and Conditions Apply



### **Low Oil Carry Over (< 1ppm)** Three Stage Oil Removal

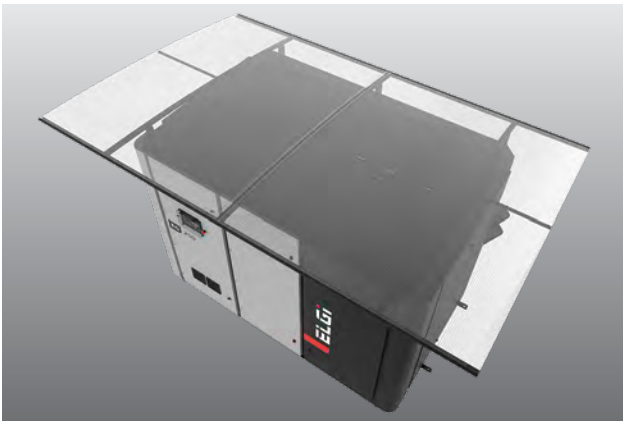
Superior Quality of Air

- Minimal pressure drop
- Increases life of air – oil separator filter
- Reduces environmental impact



### **Efficient Cooling System** Large Cooler and Optimized Fan

- Oversized and bolted cooler design eliminates thermal stresses and extends compressor life
- Lowers power consumption
- Keeps discharged compressed air temperature low easing the load on downstream equipment



### **Reliability Under Extreme Conditions** Robust and Reliable

Designed to perform at extreme temperatures

- From cold to hot and from dry to extremely humid conditions with design temperatures up to 115° F
- Optional outdoor modification and low ambient designs available



### **Designed for Serviceability** Low Maintenance Costs

- Hinged panel design gives easy access
- Stainless control lines and O-ring flanged faces eliminates leaks
- Filtered cabinet extends component life



### Safety and Protection

EG Series compressors are designed to ensure the highest level of safety.

**High-Pressure Trip | High-Temperature Trip | Pressure Relief Valve | Low Voltage Trip | Single Phase Preventer | Reverse Rotation Prevention**



### Best-In-Class Warranty\*

The EG Series offers lifetime air end warranty and a five-year package warranty, ensuring customers receive best-in-class compressed air products along with industry-leading warranty coverage.

## EG Series

The Technological Edge to Power Your Business



- **Two-Stage Air Filtration**  
Increased Life of Consumables
- **Ease Of Maintenance**  
Ease of Access to Components with Removable Panels
- **Neuron III Controller**  
Advanced, Intelligent Controller for Safety and Reliability
- **Energy-Efficient**  
Eco-Friendly Compressors
- **Robust Cooling System**  
Reduced Air outlet and Oil Temperature
- **Excellent Oil Separation OSBIC**  
1 PPM Oil Carry Over
- **Optional Built-in VFD**  
Compact and Reduced Footprint
- **Safety Compliant Package**  
CE Certified
- **Highly Efficient Motor**  
Energy Cost Savings

\* Terms and Conditions Apply

**Neuron III Advanced Controller**



**Reports**

Provides cumulative report (run hours, load hours, stop hours, fault hours and remaining hours of operation for filters and other maintenance needs such as oil replacement)

- **Detailed Report** - Previous 15 days (load hours, unload hours, stop hours, fault hours and number of times machine stopped due to standby)
- **Fault Report** - Previous 99 faults in chronological order with real time stamping and type of fault.
- **VFD Parameters** - Displays current, frequency, voltage and percentage of operating load distribution hours.
- **Mimic Display** - Readout and closed-loop control

**Remote Monitoring**

**DCS (MODBUS RTU/RS 485)** - The controller is enabled to synchronise with the distributed control system - control of compressor from the control panel of the customer.

**SCADA** - Compressor control through PC with remote monitoring by supervisory control and data acquisition process.

**Save Energy with Heat Recovery System**

ELGi's Heat Recovery System is an accessory that can be added to the EG Series compressor.

The Heat Recovery System can recover up to 76% of the waste heat generated during the compression process which can then in turn be used to heat water.



**Save Energy with Optional VFD**

The ELGi integrated Variable Frequency Drives (VFD) matches the compressor output with the demand by varying motor speed which reduces the power consumption and subsequently results in energy savings.

The VFD helps in eliminating frequent load-unload cycles. In a fixed speed compressor with a Star-Delta starter, the starting current is as high as three times the full load current (FLC). With ELGi VFD, the starting current is less than the FLC.

**Advantages:**

- Energy savings
- Improved power factor
- Low starting current and reduced maximum demand
- Reduced maintenance



## Technical Specifications - 60Hz Fixed Speed

Model	Motor Power		Free Air Delivery	Working Pressure	Dimensions			Weight	Sound Level
	60Hz	HP			kW	cfm	psi		
EG11-100	15	11	71	100	56	32	58	1213	69
EG11-125			62	125					
EG11-150			55	150					
EG11-175			49	175					
EG15-100	20	15	94	100	56	32	58	1257	69
EG15-125			85	125					
EG15-150			77	150					
EG15-175			65	175					
EG18-100	25	18	117	100	56	32	58	1411	69
EG18-125			110	125					
EG18-150			92	150					
EG18-175			82	175					
EG22-100	30	22	143	100	56	32	58	1433	69
EG22-125			134	125					
EG22-150			116	150					
EG22-175			96	175					
EG30-100	40	30	203	100	67	44	62	2401	69
EG30-125			178	125					
EG30-150			153	150					
EG30-175			136	175					
EG37-100	50	37	248	100	67	44	62	2447	69
EG37-115			236	115					
EG37-125			212	125					
EG37-150			203	150					
EG37-175			172	175					
EG45-100	60	45	302	100	67	44	62	2453	69
EG45-115			282	115					
EG45-125			267	125					
EG45-150			230	150					
EG45-175			208	175					
EG55-100	75	55	375	100	77	50	69	3635	69
EG55-115			355	115					
EG55-125			343	125					
EG55-150			288	150					
EG55-175			271	175					
EG75-100	100	75	520	100	81	50	77	4453	69
EG75-115			500	115					
EG75-125			450	125					
EG75-150			415	150					
EG75-175			390	175					
EG90-100	125	90	604	100	111	65	84	6197	75
EG90-115			550	115					
EG90-125			536	125					
EG90-150			478	150					
EG110-100	150	110	720	100	111	65	83	6393	75
EG110-115			650	115					
EG110-125			630	125					
EG110-150			570	150					

**Note:**

- Free Air Delivery(FAD) is tested as per ISO 1217:2009 Ed.4 Annex.C (Fixed speed), Annex.E (VFD) Sound level per ISO 2151, 2<sup>nd</sup> Edition at 1m distance in field condition, ±3db(A).
- Due to continuous engineering improvements, the specifications are subject to change without prior notice.

Model	Motor Power		Free Air Delivery	Working Pressure	Dimensions			Weight	Sound Level
	60Hz	HP			kW	cfm	psi		
EG160-100	200	160	975	100	111	65	84	7840	75
EG160-115			908	115					
EG160-125			850	125					
EG160-150			778	150					
EG90P-100	125	90	615	100	115	74	76	6197	75
EG90P-115			551	115					
EG90P-125			550	125					
EG90P-150			473	150					
EG90P-175			426	175					
EG110P-100	150	110	761	100	115	74	76	6824	76
EG110P-115			755	115					
EG110P-125			680	125					
EG110P-150			595	150					
EG110P-175			530	175					
EG160P-100	200	160	1051	100	115	74	76	8936	76
EG160P-115			990	115					
EG160P-125			920	125					
EG160P-150			858	150					
EG160P-175			720	175					
EG200-100	250	200	1275	100	126	83	88	12586	78
EG200-115			1192	115					
EG200-125			1175	125					
EG200-150			1000	150					
EG250-100	300	250	1515	100	126	83	88	12632	78
EG250-115			1371	115					
EG250-125			1350	125					
EG250-150			1170	150					

## Technical Specifications - 60Hz Variable Speed

Model	Motor Power		Free Air Delivery	Working Pressure	Dimensions			Weight	Sound Level
	60Hz	HP			kW	cfm	psi		
EG11 V	15	11	22-71	100-175	56	32	58	1323	69
EG15 V	20	15	34-94	100-175	56	32	58	1433	69
EG18 V	25	18	50-117	100-175	56	32	58	1477	69
EG22 V	30	22	66-143	100-175	56	32	58	1477	69
EG30 V	40	30	42-203	100-175	67	44	62	2501	69
EG37 V	50	37	54-248	100-175	67	44	62	2547	69
EG45 V	60	45	60-302	100-175	67	44	62	2553	69
EG55 V	75	55	79-375	100-175	77	50	69	4012	69
EG75 V	100	75	187-520	100-175	81	50	77	4607	69
EG90 V	125	90	224-604	100-150	111	65	84	5418	75
EG110 V	150	110	262-720	100-150	111	65	83	6636	75
EG160 V	200	160	377-975	100-150	111	65	84	8148	75
EG90P V	125	90	245-612	100-175	115	74	76	6197	75
EG110P V	150	110	278-761	100-175	115	74	76	6824	76
EG160P V	200	160	409-1051	100-175	115	74	76	8936	76
EG200 V	250	200	485-1275	100-150	126	83	88	12862	78
EG250 V	300	250	560-1515	100-150	126	83	88	12908	78

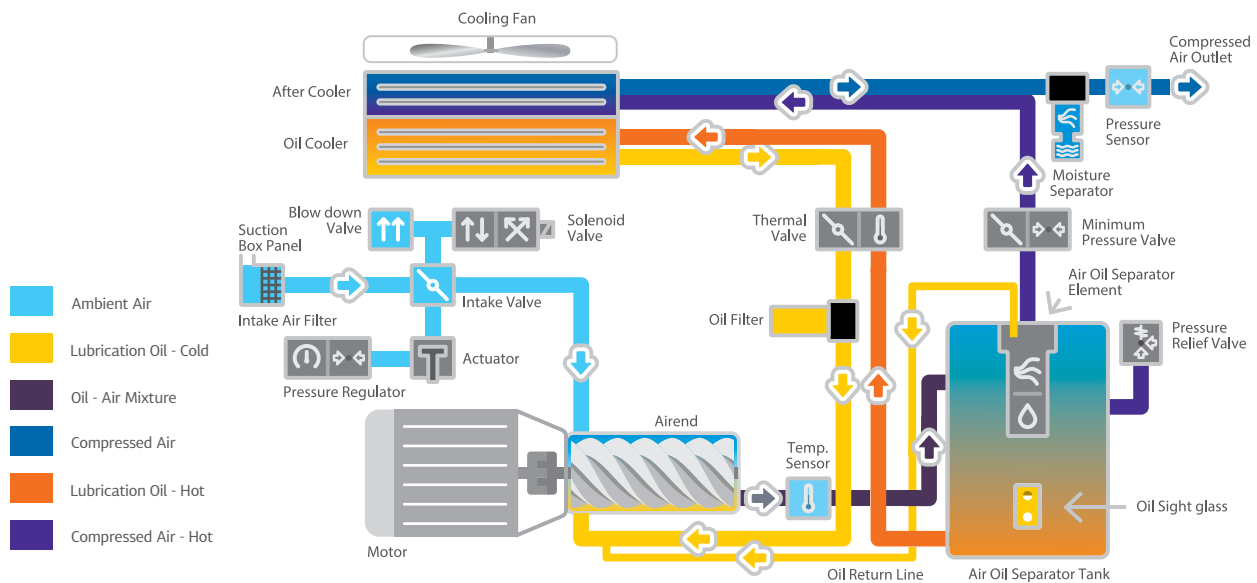
**Note:**

- Free Air Delivery(FAD) is tested as per ISO 1217:2009 Ed.4 Annex.C (Fixed speed), Annex.E (VFD) Sound level per ISO 2151, 2<sup>nd</sup> Edition at 1m distance in field condition, ±3db(A).
- Due to continuous engineering improvements, the specifications are subject to change without prior notice.

**Available Options:**

- Synthetic Oil / Food Grade Oil
- 230/460 V ( 3 Phase) / 200V ( 3 Phase ) ; up to EG 37

## Air-Oil Flow Circuit



## After Sales and Service

ELGi has a wide service network across North America readily available to help with installation and service.

To find the nearest provider visit <https://www.elgi.com/us/distributors/>



## ELGi Airmate Accessories



EZZ Drain



Oil Water Separator



Compressed Air Dryer



Moisture Separator



Filtration



UPTIME Manager



### Genuine Spares and Service

Genuine service and regular service helps avoid unexpected compressor failures and the risk of subsequent damage to other vital compressor components. ELGi spare parts are designed, manufactured, and checked for quality to meet the standards of a new ELGi compressor. ELGi consistently focuses on improving spare parts to provide customers with the best results.



### ELGi Air Audit

The ELGi air audit program helps improve compressors' performance by identifying the areas of wastage in the system. ELGi air audit services are offered for generation, distribution, and demand-side systems.

# ELGi

Always Better.

Elgi Equipments Limited is a global air compressor manufacturer with a broad line of innovative and technologically superior compressed air systems.

ELGi has consistently worked towards ensuring that its customers achieve their productivity goals while keeping the cost of ownership low. ELGi offers

a complete range of compressed air solutions from oil lubricated, oil free rotary screw compressors, and oil lubricated compressors, to dryers, filters, and downstream accessories.

The company's portfolio of over 400 products has found wide application across industries.

60+

Years of Customer-Centric Innovation

2 Mn+

Installations Worldwide

120+

Countries and Counting



**DEMING PRIZE**  
**2019**

ELGi is the first globally established industrial air compressor manufacturer to be awarded the Deming Prize for Excellence in Total Quality Management.

**ELGi**<sup>®</sup>  
Always Better.

